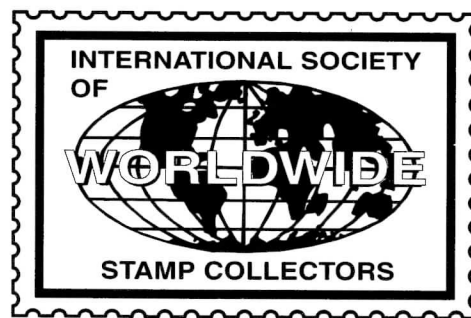


The Circuit

January/February 2007 • Volume 25 No. 1



Affiliate of: APS (#151) & ATA (#89)

www.iswsc.org

The Official Journal of the International Society of Worldwide Stamp Collectors

President's Column

by Joanne Berkowitz (#98)
ISWSC President

It is hard to believe that the year is almost over (and will be over by the time you read this!). "Philatelically" speaking, it's been a great year. Washington 2006 was a fantastic event and we managed to pick up a number of new members as a result. Your publicity director, John Seidl, has been busy getting articles and letters in many philatelic publications. He even got a letter into the APS journal! I was sorry to miss the APS show in August but I will definitely be in Portland next August. I hope to see many of you there.

While we will not have our own booth at the APS show, if any of you are going and can volunteer an hour at the APS Affiliates table, it would be appreciated. We will also have a meeting there for any who are attending. Details of time and place will come later.

I want to put in a big Thank You to all our circuit and sales managers. They do a great job and make our club successful. Please let them know you appreciate their efforts as you pass on those swap circuits or mail back exchanges and sales books.

Last weekend, we had our annual local stamp show, Sacapex. Our Sacramento club has about 250 members and meets weekly. Our annual show has exhibits, a dealers' bourse and a silent auction. I was happy to clean out my drawers and entered 10 lots in the auction. I sold all but one, plowing the money back into purchases at the bourse. The turnout surpassed previous years and the dealers went away happy with their business. I am always impressed by the dedication of the members to making this show a success. Setting up exhibits, arranging the banquet and awards, making sure the dealers have what they need and then cleaning it all up at the end is no small task.

If you are using Scoot 2005 or 2006, I found an

error. Portuguese India 285 and 285A are the same stamp with an "a" or "b" overprint. In Scott, the overprint looks the same for both. It's because they printed the "a" overprint twice. The "b" overprint is at the same level on each side of the stamp, which has a central vertical perforation bisecting the stamp. After consulting with an expert on these issues, Scott will be notified for a correction in the next issue. I'd always heard that there were errors in Scott but this is the first time I found one. I can't tell you how long I looked at those two pictures, trying to tell what the difference was, only to find out there was no difference in the photos they had!

I hope everyone had a great holiday season and that your New Years' diets are going well.



Announcing Our Newest Board Member

Welcome to Jeff Schumer. Jeff is a financial planner and advisor from Luther, MD. In addition to worldwide stamps, he also collects United States musical advertising covers. He was editor of the newsletter of the Maryland Postal History Society for several years. He plays French Horn and has even tried his hand at composition. For more about Jeff, you can visit his website at www.jschumer1.homestead.com.

ISWSC BOARD MEMBERS**President:**

Joanne Berkowitz (#98)
125 43rd Street
Sacramento, CA 95819-2101 – USA
joannebe@pacbell.net

Executive Director:

Terry Myers (#736)
9463 Benbrook Blvd. #114
Benbrook, TX 76126 – USA
TMyers6497@aol.com

Secretary:

Alessandro Artini (#2451)
Via C. Baroni 210
I-20142 Milano – ITALY
althinkart@yahoo.com

Vice President for Charitable Services:

Richard Rizzo (#2215)
18300 Winter Park Court
Gaithersburg, MD 20879-4626 – USA
poly76ce@aim.com

Vice President for Public Relations:

John Seidl (#1646)
4324 Granby Way
Marietta, GA 30062-8150 – USA
jseidl@mindspring.com

ISWSC Director:

Duncan Koller (#2154)
844 NE 73rd Ave.
Hillsboro, OR 97124 – USA
duncankoller@comcast.net

ISWSC Director:

Jeff Schumer (#2101)
1010 Fallscroft Way
Lutherville, MD 21093-1706 – USA

ISWSC Director and Immediate Past**President:**

Randy Smith (#1111)
P.O. Box 2085
Minneapolis, MN 55402-0085 – USA
rasmory4@frontiernet.net

AUCTION MANAGER

Everett King (#1389)
P.O. Box 130
Whitethorn, CA 95589 – USA
Ph: 707-986-7230
stamps@whitethorn.com

WEBMASTER

Rick Simpson (#1703)
HC79 Box 52-E
Romney, WV 26757 – USA
Ph: 304-822-3494
rsimpson@141.com

WHATZIT COORDINATOR

Richard Barnes (#2425)
11715 - 123rd Street
Edmonton, AB T5M 0G8
CANADA
barnes@interbaun.com

SALES CIRCUIT

Manager (U.S.): John Baumert (#1246)
P.O. Box 5574
Bloomington, IN 47407 – USA
jhbaumert@sbcglobal.net

OMNI CIRCUIT

Manager: Jim Millette (#1314)
8901 Marcel Cadieux #207
Montreal, PQ H2M 2L9 – CANADA
jmillett@globetrotter.net

Co-Manager: David Paul (#59)
2 Heritage Drive
Belchertown, MA 01007 – USA

Co-Manager: Thomas Pomaski (#410)
8195 National Drive
Melbourne, FL 32940 – USA
stamper10@earthlink.net

Co-Manager: Dale E. Harris (#2311)
212 Schofield
Reedsport, OR 97467-1366 – USA
harrisda@ohsu.edu

SWAP CIRCUIT

Coordinator: Randy Smith (#1111)
P.O. Box 2085
Minneapolis, MN 55402-0085 – USA
rasmory4@frontiernet.net

Large I Circuit: John McArthur (#768)
14 Stonebrook
Lawton, OK 73505-9599 – USA
jmmcarthur@earthlink.net

Large II Circuit: John Seidl (#1646)
4324 Granby Way
Marietta, GA 30062-8150 – USA
jseidl@mindspring.com

Small/Definitive Circuit:
Kenneth Wills (#2150)
5308 Shadow Glen Drive
Grapevine, TX 76051 – USA
wills@airmail.net

CTO Circuit:

William Silvester (#1058)
378C Cotlow Road
Victoria, BC V9C 2G1 – CANADA
wgsilvester@shaw.ca

Super Circuit:

Robert Armstrong (#1392)
2209 SW Oak Ridge Rd.
Palm City, FL 32990-2159 – USA
googiepox@adelphia.net

USA Circuit: Randy Smith (#1111)

P.O. Box 2085
Minneapolis, MN 55402-0085 – USA
rasmory4@frontiernet.net

Phone or send your questions to the appropriate volunteer. Please include a self-addressed stamped envelope or IRC for a reply.

REGIONAL REPRESENTATIVES

Represent the ISWSC, distribute stamps to youth programs in their region.

Australasia: Noel Routley (#1610)
C/o Post Box 166
Koondrook 3580 – AUSTRALIA
routley@netcon.net.au

British Isles: Karen Rose (#584)
47 Heron Road — Oldbury
West Midlands B68 8AG
GREAT BRITAIN – U.K.

Canada: William Silvester (#1058)
378C Cotlow Road
Victoria, BC V9C 2G1 – CANADA
wgsilvester@shaw.ca

Cuba: Cleto Sánchez (#1311)
P.O. Box 2222, CP-10200
Havana – CUBA

Eastern Europe: Jan Szpyrka (#539)
ul.Srebrna 29
PL-44121 Gliwice – POLAND
szpyrka@zeus.polsl.gliwice.pl

Scandinavia/Baltics:

Vacant

Western Europe:

Vacant

STAMP ANSWER MAN

Myron Wambold (#2403)
E&M Etcetera
P.O. Box 2563
Inverness, FL 34451-2563 – USA
myronnw@tampabay.rr.com

NEWSLETTER EDITOR

Jennifer Arnold
2390 Willow Street
Lebanon, OR 97355 – USA
Ph: 541-990-9686
Fax: 541-259-4658
pizzazz@cmug.com

Please remember that the Editor does not mail out The Circuit. If you have any questions about your Circuit mail service, please contact Terry Myers. Thank you!

**DEADLINE
FOR THE
NEXT
ISSUE:**

JAN. 20, 2007

Annual Stamp "Grab Bag" Program

ISWSC member Marvin Warner (#248) has once again agreed to host the annual stamp grab bag program. This once a year program works like this:

1. Submit 100 used stamps (off-paper), all in one category, either all CTO, all large or all small. Use 1" by 1" to distinguish large from small. Do not send damaged, obliterated, or otherwise undesirable stamps.
2. Stamps should be in a packet, not loose, one packet per envelope. Multiple submissions are OK. To encourage further trading, you are welcome to enclose a memo or ID on our glassine packet or you may remain anonymous.
3. Each submission **MUST** include a SASE. Submissions without a SASE will be sent to the ISWSC VP for Charity as a donation. You are requested to indicate the stamp category (small, large or CTO) on the lower left hand corner of both the envelope and your SASE to help minimize errors. One word will do.
4. February 2007 is the 4-week "open window" for mailing to:
Marvin Warner
4766 Redbrook Ct.
San Diego, CA 92117 — USA
5. Neither ISWSC nor Mr. Warner accepts responsibility for quality or quantity of Glassine contents — **YOU** are the program. Use discretion — if you don't like the exchanges, please don't send them all back as new offerings.
6. You will receive in your SASE the same category of stamps that you submit. Please send stamps that are of the quality that you would like to receive. Your comments, after receipt, are solicited.
7. This program is open to all members of ISWSC.

So why not give it a try? The worst that can happen is that you lose 100 unwanted duplicates and some postage stamps. On the other hand, you just might find some usable stamps — or better yet — a new trading partner.



Dues/Advertising Policy

Dues Information:

Single/Dealer/Club 1 yr. membership: \$15.00*
Single/Dealer/Club 2 yr. membership: \$27.00*
Single/Dealer/Club 3 yr. membership: \$39.00*
Youth 1 yr. membership (under 18): \$12.00*

*Plus 250 large commemoratives for the Youth Program or equiv. donation in US\$. Dues include six newsletters per year. You may sign up for up to three years at a time. For an application or further information send SASE or IRC to: ISWSC, 9463 Benbrook Blvd. #114, Benbrook, TX 76126, USA.

Advertising Policy:

For reasons of accountability, only members of the ISWSC, APS or ASDA may place ads. All ads dealing with philatelic concerns are acceptable. We reserve the right to edit out objectionable language. Advertisers are expected to respond to all inquiries, so be sure you can handle the responses before you offer to trade, buy or sell. If you have a bad result from answering an ad, contact the Editor. We will try to resolve the conflict.

Display Rates (Camera Ready*) per insertion:

Full page: \$75.00
Half page: \$40.00
Quarter page: \$20.00
Per column inch: \$5.00

Six repeat insertions of the same ad for the cost of five ads (one free). We will also offer a two-sided insertion for \$125 per issue.

*Camera Ready means ready to paste up or scan and print. Reductions and typesetting extra.

Classified Rates per insertion:

First 30 words, including name, address, and ZIP code are \$3. Additional words are 20 for \$1.

NOTE: State abbreviations = one word; "P.O. Box 1234" = two words; ZIP code = one word.

Make all checks payable to ISWSC in U.S. funds. Send text and payment for ads to the Editor. All addresses can be found on page 2.

Five Counterfeit APEX Certificates Come to Light in Hong Kong

American Philatelic Society News Release

www.stamps.org/news/P1529.htm

December 12, 2006

Five low-quality counterfeits of American Philatelic Expertizing Service (APEX) certificates accompanied stamps offered to a collector in Hong Kong recently. The American Philatelic Society learned of the deception from an e-mail sent to APS Deputy Executive Director Ken Martin on December 4, with digital attachments showing the five certificates.

In brief, legitimate APEX certificates:

- always include two signatures while both styles of the fakes have the same single, illegible signature.
- never include a catalogue value, as all five of these counterfeits do.
- have unique numbers no more than six digits long. Three of the forgeries have seven-digit numbers preceded by "APEX," the other two have eight- and nine-digit numbers.

Three of the five were printed on 5 $\frac{1}{8}$ - by 7 $\frac{1}{4}$ -inch pale yellow green stock of a type never used by APEX. Though catalogue values never appear on any authentic APEX certificate, each of these counterfeit certificates lists a grossly exaggerated value for an inaccurately identified, cheap, unused European stamp. Preceding a bogus Scott value — expressed in "US\$" — printed descriptions of all three state, "It is genuine, are mint hinged, unwmkd, brilliant color, fine condition." The example shown [Fig.1], misrepresented on the certificate as having a Scott catalogue value of \$1,200, is in fact, a 1946 French semipostal (Scott B204) that catalogues 30¢. All three show dates of "01-03-1983," a form of date never used by APEX.

Two certificates mimic the look of APEX certificates in use since 2003. Both of these lack the photos or computer scans found on genuine APEX certificates, and accompany U.S. stamps in clear mounts with inaccurate, illiterate inscriptions. One certificate has eight U.S. stamps of five designs mounted on it, including a pair. Genuine APEX certificates are issued only for a single stamp or other philatelic item. Again, both have spurious catalogue values. Genuine certificates show no catalogue values, for the practical reason that such values vary from catalogue to catalogue, and from year to year.

On one of the counterfeit certificates, an imperforate horizontal line pair of 2-cent Washington stamps is described as "UNITED STATES #499 WASHINGTON TWO CENTS" — unlikely, given that Scott 499 catalogues 35¢. It then states, "It is genuine imperf are error variety, horizontal pair, rose color, unwmkd, mint never hinged with original gum. Scott catalogue value US\$2,500.00." In fact, the horizontal pair, imperforate vertically, of the unwatermarked version of this stamp (Scott 499b) catalogues \$600.

The two certificates have the same inscriptions at the top as genuine APEX certificates, but only a three-line abbreviation of the seven-line inscription on genuine certificates at the bottom. Fakes show a solidly inked "apex" in the logo at bottom left, though on genuine certificates "apex" is printed in a varying pattern of fine dots. Counterfeits also have an overall shaded background design of the word "apex." Genuine certificates use a different security design in the background, which appears only across roughly the top third and the

bottom third of the certificate, the middle portion being unprinted.

Both the fake certificates accompanying U.S. stamps are dated "01/03/1988" — impossible on

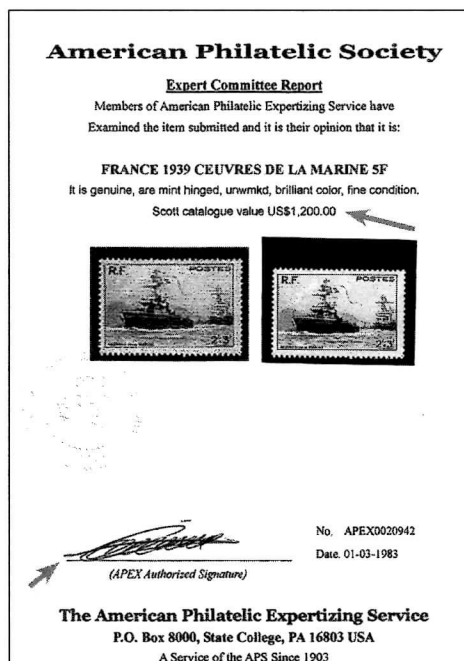


Fig.1: Never used by the American Philatelic Expertizing Service, pale yellow forms of this design accompanied three foreign stamps offered for sale at vastly inflated values in Hong Kong recently. No APEX certificate ever states catalogue value, as this one does, declaring this common 30¢ French stamp to be worth \$1,200. This counterfeit also has a single, illegible signature, whereas authentic APEX certificates are signed

Continued on page 9

When it Comes to Stamps, We're in Your Corner!



Nutmeg Stamp Sales

is your worldwide stamp travel agent.

Our two sales a month feature stamps and covers from every hemisphere of the globe.

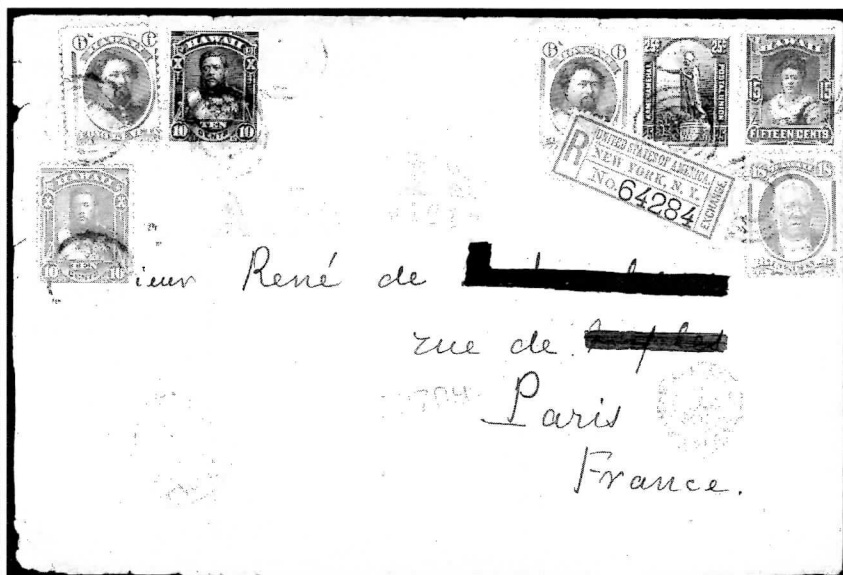
Call us today at

1-800-522-1607

for a free catalog.

View lots online at

www.nutmegstamp.com



We also buy.
Please give us a
chance to look at
your collection.



• P.O. Box 4547 Danbury CT 06813 • Fax: 203-798-7902
• Email: info@nutmegstamp.com

Swap Circuits: A Benefit of Membership

by Randy Smith (#1111)

There are several benefits to being an ISWSC member, one of which is the ability to participate in the Swap Circuit program. No matter where you live, the Swap Circuit program is one of the easiest and cheapest ways to convert your quality duplicates into stamps that you want to place in your collection. Here's how the program works:

Participants are grouped into a four or five member circuit. The first member of the group is sent a routing sheet (containing the names and addresses of the other members of the circuit and the manager who creates the circuits) and a packet of all different stamps. The first member selects the stamps he/she wants, then replaces them with an equal number of quality all different stamps. The routing sheet and the stamp packet is then mailed to the next member of the circuit.

The process continues until the last member receives the packet and makes his/her swaps. Then the packet is mailed back to the manager of the circuit, along with mint postage for sending out the next circuit. The manager then changes the order of the members, creates a new packet of stamps, and sends it back out to the participants. Once all members of the circuit have been in each position on the circuit (from first to last), a new circuit is formed with a new group of participants.

Currently, there are five circuit types from which to select: Large, Small/Definitive, CTO, Super, and USA.

- The Large circuits consist of 100 stamps that are considered "large" in size — more than 1" x 1½" (approximately) in size. Because the Large circuits are the most popular, participants are broken into two groups, each with its own manager.

- The Small/Definitive circuit contains 100-150 stamps that are smaller than 1" x 1½" in size or that are definitives (of any size).

- CTO, or Cancelled To Order, circuits contain 100 stamps and are the only circuit where CTO stamps can be traded.

- The Super circuits are the same as the Large circuits, however each stamp packet contains 200 stamps instead of 100.

- Finally, the USA circuit contains nothing but USA stamps (100 per packet).

Stamps in all circuits must be off paper, but the stamps can be mint or used, hinged or unhinged. In

order for the program to operate, annual fees are charged to Swap Circuit participants. (The term "fee" is used to distinguish them from the separate dues charged annually to be an ISWSC member. ISWSC membership is required to participate in any ISWSC program.) Except for the programs' annual fees, no cash is needed — for each stamp you select, simply replace it with another stamp, without regard to the catalog value! In order to maintain the quality of the program, members are, however, encouraged to only swap desirable stamps — common and damaged stamps are not allowed.

Now is the perfect time to join the Swap Circuit program and get the most out of your ISWSC membership! To join, complete the form accompanying this article and mail it with your fees to the address on the form. If you would like more information prior to joining the program, please contact Randy Smith (postal and e-mail addresses are listed on page 2).



Next Issue: ISWSC Roster

If all goes well, the next issue of *The Circuit* will be our bi-annual Roster Issue. Don't be looking for the regular article-filled newsletter, as that will come in the May/June issue!

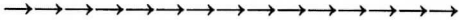
The upcoming roster issue will list you, each member, with your full contact information and collecting codes, unless you have instructed us not to earlier. Please review the label on your *Circuit* envelope for corrections in preparation for running the roster issue. If you have any changes or would like your address withheld, please contact Terry Myers (see page 2). Because the roster issue will actually be completed by the middle of January, only dues received and processed by headquarters by December 31, 2006 will be accurately reflected in the expiration dates on the roster.

ISWSC SWAP CIRCUIT MEMBERSHIP FORM

To join the ISWSC Swap Circuit program, please complete this form and return it with your fees to:

Randy Smith
PO Box 2085
Minneapolis, MN 55402
USA

Member #:		PLEASE PRINT	Minneapolis, MN 55402 USA
Name:			
Mailing Address:			
	If this is a new address, please check here: _____		
E-Mail:			
Collecting Interests:			

	# CIRCUITS REQUESTED ¹	AMOUNT ENCLOSED	
	USA /CANADA MEMBERSHIP	INTERNATIONAL MEMBERSHIP	STAMPS MONEY ²
1) MONETARY FEE <i>US \$2.00 (or equivalent in mint stamps)</i>			
2) STAMP FEE	<i>Please specify quantity of circuits requested:</i>		
LARGE CIRCUITS <i>The fee for up to 4 Large Circuits is 100 large stamps or \$5.00. The fee for up to 9 Large Circuits is 200 large stamps or \$10.00.</i>			
SMALL/DEFINITIVE CIRCUITS <i>The fee for up to 4 Small/Def. Circuits is 100 small stamps or \$5.00. The fee for up to 9 Small Circuits is 200 small stamps or \$10.00.</i>			
CANCELLED TO ORDER (CTO) CIRCUITS <i>The fee for up to 4 CTO Circuits is 100 CTO stamps or \$5.00. (4 circuit maximum.)</i>			
SUPER CIRCUITS <i>The fee for up to 4 Super Circuits is 200 large stamps or \$10.00. The fee for up to 9 Super Circuits is 400 large stamps or \$20.00.</i>			
USA CIRCUITS (USA stamps only) <i>The fee for up to 4 USA Circuits is 100 USA stamps or \$5.00. (4 circuit maximum.)</i>			
Totals:			

¹ This is the number of circuits (per type) you want to be on at the same time. USA/Canada circuits take approximately 1 month to circulate, International circuits take approximately 1½ months to circulate.

² Checks must be in US funds and should be made payable to ISWSC. Cash is sent at your own risk.

Overpayment of fees, if any, should be (check one): ☐ Donated to ISWSC ☐ Returned

Questions? Write to the address above or send an e-mail to rasmay4@frontiernet.net. THANK YOU!!

State of Oman

by Richard Barnes (#2425)

From the *Edmonton Stamp Club Bulletin*
(Volume 88, Number 5)

Collecting Arab stamps, I quickly came into contact with the State of Oman stamps. A search of Scott, Michel and Stanley Gibbons catalogues revealed that none of these list or even note these stamps. The usual sources for obscure Cinderellas and phantoms such as *Album Weeds* and the official publication *The Postal History of Oman* (Oman P.T.T. Ministry) were also silent.

A search of the American Philatelic Research Library revealed one article in the short-lived magazine *The Arab Philatelist*. The little information I have been able to gather is from talking to other collectors of the stamps of the Middle East.

The State of Oman stamps were first printed during a dynamic historical time. The Imperial

British presence was withdrawing from Arabia. Nasserism, Pan Arabism and communism concurrently came out into the open replacing the retreating imperialism.

In 1968, the unrest in Yemen and Aden spilled over into Oman. Much like the Hashemites [the ruling family] of Jordan, the



Fig. 1:
State of Oman,
the first issue.

Sultan of Oman had family or tribal support. An obscure struggle ensued. The Sultan received SAS support [from the British], which was successful in training loyalist forces. An efficient military, a popular political agenda combined with a prosperous oil-based economy to produce a loyalist victory for the Sultan.

The rebels in Oman never received the kind



Fig. 2:
The first issue,
overprinted for
death of U.S.
President Kennedy.



Fig. 3:
State of Oman coin

regional commitments, there were transportation difficulties, and because the Southern Yemen government was obstructionist.

Against this background the first State of Oman stamps were printed (fig. 1) by the Omani rebels. Undoubtedly the idea was to produce stamps as a source of income for the rebel cause.

The rebels hoped the stamps would legitimize their cause and possibly even be used for postage within the area of rebel control. These stamps are relatively common in mint condition, unlike later issues that were mainly cancelled to order for Eastern Block packet makers.

This issue was financially successful, resulting in a series of overprints to generate more revenue (fig. 2). A cash cow had been born. More stamps were quickly produced, as were coins (fig. 3) and many topicals were produced showing classic art, dogs, cats, butterflies, exotic animals, and gold and silver foil creations, etc.

Even after the revolt ended, the stamps continued (fig. 4). By this time, the stamps were being made strictly to provide money for the printers. Lovely topicals continued on themes such as space, sports, public figures, trains, cars



Fig. 4:
"Old Masters" type
issued even after the
revolt had ended.

Continued on next page

State of Oman

Continued from page 8



Fig. 5: State of Oman celebrates the Silver Jubilee of Queen Elizabeth II, monarch of the imperialist power that supported the Sultan's government! (Income is income)

— anything to make money.

Even the "hated" representatives of the imperialists SAS are represented (fig. 5) on State of Oman stamps. State of Oman stamps continued to be printed at least into 1984 (fig. 6).

The printers of these stamps were located worldwide — in Austria, France, Great Britain, Hungary, Romania, and probably in other countries. Not only does the State of Oman make an interesting topical collection, these stamps also provide a fascinating historical and economic philatelic study.



Fig. 6: Production continued long after the revolt failed: this item for cat lovers from 1984.

Counterfeit APEX Certificates

Continued from page 4

the new-style APEX certificates, which weren't introduced until 2003. Finally, the APEX logo and "USA" appear in the center of the bogus embossed 37-millimeter seal on all five of the forgeries. There is no "USA" in the genuine APEX seal.

APEX takes any attempt to counterfeit its certificates with the utmost concern. These five forged documents represent a minimal threat to collectors in the United States. Collectors who feel they may have acquired material with a counterfeit certificate are urged to check its characteristics against those described here. Contact APEX with the number and date of any APEX certificate for verification by comparison with APEX records.

Since 1903, APEX has encouraged the expertizing of philatelic material to safeguard the integrity of the hobby, not only for the collector of today, but also for the benefit of future owners. More than a century and over 174,000 items later, that protection continues.

Today, utilizing the services of more than 140 specialist-experts, its own on-site high-tech equipment and an ever-growing reference collection of worldwide stamps, fakes and forgeries, APEX offers state-of-the-art opinions on the genuineness of philatelic material at moderate cost. APEX relies on the largest pool of philatelic expertise available, a vast team of highly qualified specialists, collectors, authors, exhibitors and dealers, located throughout the United States and in several other countries as well, overseen by Director of Expertizing Mercer Bristow, an APS staff veteran of more than 25 years experience.



Moving?

Please help us to keep your address current. We don't want you to miss your next issue of *The Circuit*! If you have moved recently or plan on a move soon, please send your change of address by mail or email to:

Terry Myers (#736)
9463 Benbrook Blvd. #114
Benbrook, TX 76126 – USA
TMyers6497@aol.com

Whatzit? – Success

by Richard Barnes (# 2425)
Whatzit? Coordinator

In a box of BNA covers was a 102 card with a Newfoundland Aerial Service stamp, Fig 1. The central design depicts a red-brown Vickers Vimy aircraft flying over a bay against clouds and a high hill. The stamp has white lettering within a green edging. The paper is not watermarked and it is perforated 11 x 11. I checked the Unitrade catalogue, the American Air Mail catalogue (Vol 4) and Boggs' *The Postage Stamps and Postal History of Newfoundland* without success. You may have noted that I did not bother to check Scott's.

I was not surprised because the stamp does not have "Newfoundland Postage" printed on it as an official stamp would have. However, I was disappointed not to find a note referring to this stamp. I turned to my old standbys: *Album Weeds*, *Phantom Philately*, etc. No joy there, either.

I went into my usual mode for searching for information and took my Whatzit to the local stamp club. Some members thought as I did that this was probably a semi-official issue from the 1920s or 1930s, much like the Canadian private stamps used by aero clubs and private airlines. The Scott catalogue denotes that series of stamps with the prefix CL. Another club member thought it might be an advertising label for an aerial mapping survey company. Yet another view was that it is strictly a Cinderella stamp to get money from gullible stamp collectors such as myself.

I discussed this stamp with the late Ian Paterson (local philatelist and dealer). He supported the concept of separating collectors from their money. He remembered a three-stamp set of Newfoundland aerial service stamps from the 1920s or 1930s that were a philatelic scam.

I also sent letters to fellow collectors who I exchange stamps with. Ron Robinson, an airmail collector in England, sent me an excerpt from a February 2002 Harmers auction catalogue confirming a three-stamp set of 15 cent Aerial Survey (sic) essays dated 27 November 1922, in various shades. The description further stated that the auction lot includes "a single of the forgery" for those essays. The description concluded stating that they are illustrated on page 59 of the *Newfoundland Air Mails* by C.H.C Harmer.

At a local stamp shop, Northgate Stamps I

found a copy of the *Newfoundland Specialized Catalogue* by Walsh and Butt. This catalogue describes three different Aerial Services essays produced on 27 Nov 1922: TE 1: red-brown or brown and black, imperf., no gum; TE 2: brown and black, perf 14 x 13.5, NG; and TE 3: brown and blue, perf 14 x 13.5, NG. The imperf, black and white illustration for these essays matches the design of my stamp. There was no mention of a forgery for these essays.



Fig. 1

I put notes into the Edmonton Stamp Club Bulletin and the Canadian Forces Philatelic Bulletin asking members for further information. I received four responses. The first came from Dave Gronbeck Jones. He found a colour image of a cover bearing this stamp in a current Charles Firby auction. My lack of knowledge and my old machine precluded my being able to pull up this cover from e-Bay. Dave goes on to say that Firby attributes the creation of the label (my stamp) to A.C. Roessler, stamp dealer and noted creator of Cinderella's at the time. I have seen it described as a "faked or fraudulent essay", but since essays are by definition unissued, Roessler was not breaking any serious law.

Jerry Jarnick provided a concise history of my unknown stamp. Here is an excerpt of his e-mail to me. In *Newfoundland Air Mails*, Harmer states, "In his rather flamboyant publicity of 3 March, 1923, the airmail dealer, A.C. Roessler of East Orange, N.J. offered a crude parody of the 15 cent essay at "Postpaid" 50 cents. It is typographed and embossed with a red-brown centre and green frame."

It was brought to my attention that *The Encyclopaedia of British Empire Postage Stamps*, Vol 4, a book on my own shelf but not checked by me states: "A typographed imitation of this essay (TE 1-TE 3), with the centre embossed in dark brown in a green frame was made in America some years later. It is fairly common."

I was provided with a photocopy of the relevant page from the book *Newfoundland Airmails* that states, "A crude, poorly embossed, lithographed forgery of the 15 cent essay with red-brown centre and dark green frame was produced in America some years later. Described as essays, these were marketed at the time at 50 cents each."

I had success identifying my unknown stamp with the assistance of fellow collectors and their

Continued on next page

Whatzit?

Continued from page 10

knowledge and reference material. This is an example of what I hope we can together achieve while having fun with the Whatzit column.

I found among a selection of Russian Levant stamps the following two stamps, Fig 2 and Fig 3. They are overprints from the Russian Tercentenary of the founding of the Romanov dynasty set of stamps, Scott #94, design # A22 with the blue-green portrait of Catherine II. The overprint on Fig 2 has a central design of



Fig. 2

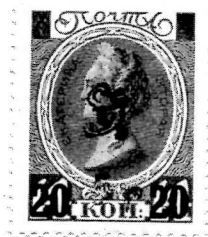


Fig. 3

entwined snakes (?) and below, between the original 14k values a new value of 5 r (?). The second stamp, Fig 3, has an additional overprint of 20 obliterating the original values of 14k. Has any member any idea of why, when, by whom these overprints were made? What does the design of the central overprint represent?

I did not think it possible, but I am coming close to the last of my unidentified stamps on my desk. Please send me a scan or mail me your unknown stamps. Members must have some. I need the assistance of members for this column. I will promptly return your stamps to you. Both members and I enjoy reading about your search to identify unknown stamps. If you have made a search, please share your experience with us.

Richard T. Barnes
11715 - 123rd St
Edmonton, AB T5M 0G8
CANADA
Or via e-mail at barnes@interbaun.com

Membership Update

New Members

#2517 Hamilton Southworth, Jr. (exp 11/30/07)
1133 Park Avenue
New York City, NY 10128-1246 — USA
ehsouth@aol.com

#2518 William McLean (exp 11/30/07)
P.O. Box 296
Manahawkin, NJ 08050-4220 — USA

#2519 Paul Kaufman (exp 11/30/07)
P.O. Box 940001
Rockaway, NY 11694-0001 — USA
A, Beg, EE

#2520 Kirsten Ball (exp 11/30/07)
3205 N. University Dr., #412D
Nacogdoches, TX 75965-2683 — USA
nacalina@gmail.com
A, Beg, 37, vintage postcards

Address Changes/Corrections

#19 Bailey 3418 Broken Bow Dr.
Land O Lakes, FL 34639-9016
#226 Trent P.O. Box 563
Fulton, MO 65251-0563

E-mail Address Changes/Corrections

#2472 Ratcliff tautog639@techline.com

Resigned

None.

Returned Mail – Unknown Address

#2417 Roberts

With a large membership, our records are always being updated (phone numbers, APS and ATA membership numbers, and age). We'd like your assistance in improving the data base, so send this information by mail or email to:

Terry Myers (#736)
9463 Benbrook Blvd. #114
Benbrook, TX 76126 – USA
TMyers6497@aol.com



ADVERTISING

Classified Rates Per Insertion

First 30 words, including name, address, and ZIP code are \$3. Additional words are 20 for \$1. NOTE: State abbreviations = one word; P.O. Box 1234 = 2 words; ZIP code = one word. make all checks payable to ISWSC in U.S. funds. Send text and payment for ads to the Editor (address on page 2).

NEED 20¢ STAMPS – THE ONES MOST dealers refuse to show you? I will send you 100 grams at 5¢ per stamp. W.T. Kiepora (ISWSC #503), P.O. Box 333, Soledad CA 93960-0333. [11-12/07]

BREAKING UP 60-YEAR ACCUMULATION. Let me send you a stuffed envelope of old, new, mint and used, etc. Pick what you want at 1/3 SCV and return the balance. Gelfman (ISWSC #1849), Box 315, Old Bethpage, NY 11804 USA. [9-10/08]

UNITED STATES USED, ALL DIFFERENT Collections: 1001 \$15.95; 1200 \$25.95; 1300 \$28.95; 1400 \$34.95; 1500 \$45.95; 1600 \$55.95; 1700 \$79.95. Commems only: 1000 \$29.95; 1100 \$34.95; 1200 \$44.95; 1300 \$55.95; 1400 \$79.95; 1500 \$129.95. Airmails: 100 \$24.95; 110 \$39.95. Se-Tenants: 300 \$9.95; 350 \$19.95. Postage & insurance extra. Exchanges considered. VISA, MasterCard, American Express, Discover accepted. I. Bick (ISWSC #502), P.O. Box 854, Van Nuys, CA 91408 USA; 818-997-6496; e-mail iibick@sbcglobal.net. [3-4/07]

HAVING TROUBLE finding newer used and those elusive common stamps? Free lists. Darrell L. George (ISWSC #635), 19410 Cantrell Road, Little Rock, AR 72223-4422 USA. [1-2/07]

PAYING FULL CATALOG for stamps valued 20¢–\$1.00 any country with readable cancels (place & complete date) 1880-1920. Robert Fisher (ISWSC #1608), P.O. Box 923, Penney Farms, FL 32079; rafstamps@juno.com. [9-10/07]

Articles Needed

We need you... to submit an article or item of interest to *The Circuit*!! As an ISWSC member, you are encouraged to contribute to *The Circuit* because each member has his/her unique perspective to collecting worldwide stamps. Please consider writing an article about your specific area of interest.

Be sure to include your name and member number when submitting material for publication in the newsletter. You can contact the editor at the address listed on page 2.



You Wanna Know What????

by M. Wambold (#2403)

Remember, someone wiser than me once said, "There are no stupid questions..." Got a question about the stamp collecting kingdom you can't find an answer for — or are you just starting out and need some advice?

The StampAnswer Man will do his best to find the answers you need or find someone who has them. Just go to:

http://www.iswsc.org/iswsc_stampman.shtml

and click onto "Check out the StampAnswer Man Questions & Answers." Then go to "Sign this Guestbook" and you are on your way.

This site is for anyone who is looking for answers.

Where to Send What

Membership Renewals, Applications, Changes in Mailing Address, Roster Changes, Etc:

Terry Myers (#736)
9463 Benbrook Blvd. #114
Benbrook, TX 76126 – USA
TMyers6497@aol.com

Annual 250 Stamp Donations:

Richard Rizzo (#2215)
18300 Winter Park Court
Gaithersburg, MD 20879-4626 – USA
poly76ce@aim.com

Payments for Advertisements:

Jennifer Arnold
2390 Willow Street
Lebanon OR 97355-3064
Ph: 541-990-9686; Fax: 541-259-4658
pizzazz@cmug.com

Auction Bids & Lots and Payments:

Everett King (#1389)
P.O. Box 130, Whitethorn CA 95589
stamps@whitethorn.com

Text for Articles for *The Circuit*, Corrections for Articles: Send to Jennifer Arnold (see above) via USPS, fax or email. When emailing graphics for publication, please use a higher resolution (150 dpi). Please contact the Editor if you have any questions about format.